

Leading Farmers CZ, a.s. and Leading Farmers SK, s.r.o.

Company Profile

KVALITA • INOVACE • SOFISTIKOVANÁ ŘEŠENÍ



Leading Farmers CZ, a.s.

- Established in 2000 by MBO of several employees of Hydro Czech Republic, majority owned by private Norwegian investors
- Major product lines
 - Distribution of smart farming technologies and farm electronics
 - System integration in precision farming area
 - Farm advisory, data processing
 - Internet advisory, trading, communication and information platform www.leadingfarmers.cz
- Main sales territory is the Czech Republic and Slovakia with certain export activities to various European countries
- Since 2015 operations in Slovakia are carried out by sister company - Leading Farmers SK, s.r.o.
- 16 employees in both countries combined (2017)

Distribution of smart farming technologies and farm electronics

- GPS guidance, autosteer systems, application and section control systems - Trimble Autopilot, EZ-Pilot, displays, Field-IQ, WeedSeeker, FarmWorks software (Trimble)
- optical sensors for plant canopy assessment - Yara N-Sensor, Yara N-Tester (Yara Agri International, formerly Norsk Hydro)
- sprayer boom height control system UC4, UC5 (Norac)
- RTK VRS, Range Point RTX, OmniSTAR XP/HP correction signals (Trimble)
- grain moisture tester, weather stations, anemometers, pH metres, penetrometers, soil moisture testers, thermometers, chlorophyll metres, tractor cameras, handheld GPS, electronic pest traps, pest repellers, electric sample thrashers, NIR grain analysers etc. (various suppliers)

Distribution of smart farming technologies - pictures



Distribution of farm electronics - pictures



KVALITA • INOVACE • SOFISTIKOVANÁ ŘEŠENÍ

LEADING FARMERS

System integration and own development

- Installation cable harnesses and electronics kits for connecting of Trimble Field-IQ and EZ-Boom section control systems with 50+ sprayer, planter, drill and spreader brands/models
- Farm vehicles optimisation software - web application
- Controlled Traffic Farming projects
- Electronic pest recognition systems
- Autonomous/robotic farm machinery

System integration and own development - pictures



© Leading Farmers CZ, a.s.



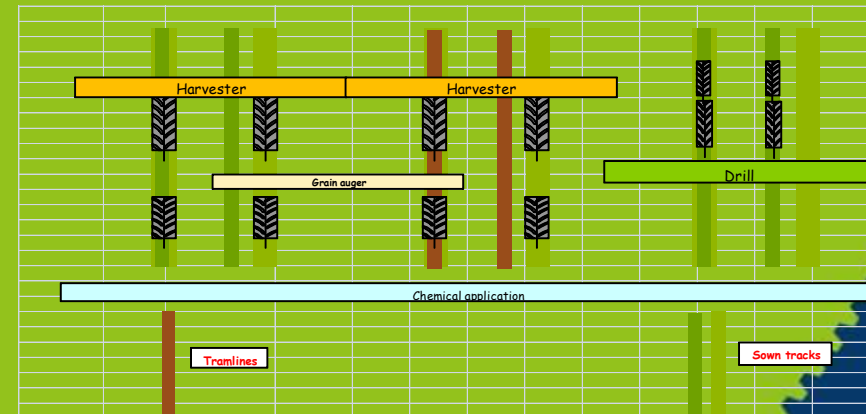
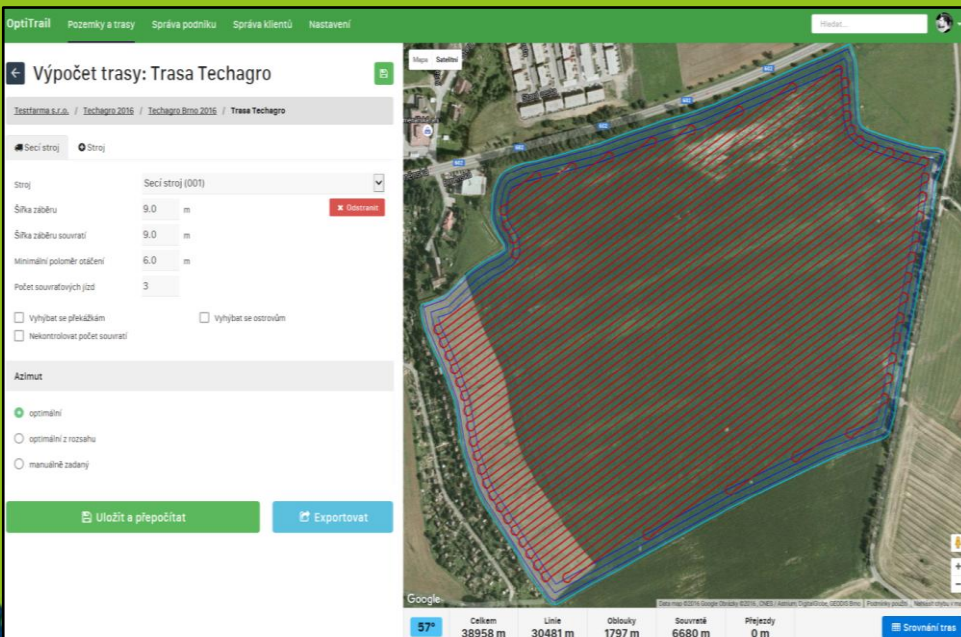
© Leading Farmers CZ, a.s.



© Leading Farmers CZ, a.s.



© Leading Farmers CZ, a.s.



AdTrac. A CTF system with two standard track widths, the narrower using one track of the wider, resulting in an additional track. Implements and harvester can be any common width or direct multiple. This is a flexible system because any gauge of narrower standard track width can be chosen and it has no influence on the implement width or tracked area

Calculation of tracked area			Input your own figures in the yellow boxes	
Harvester drive tyre section width, mm	Harvester cutting width, m	Widest tyre section width of narrower gauge, mm	Tracked width/harvest width, m	% tracked area
650	5	400	1.7	34.0
800	8	710	2.31	28.9
1050	9	710	2.81	31.2

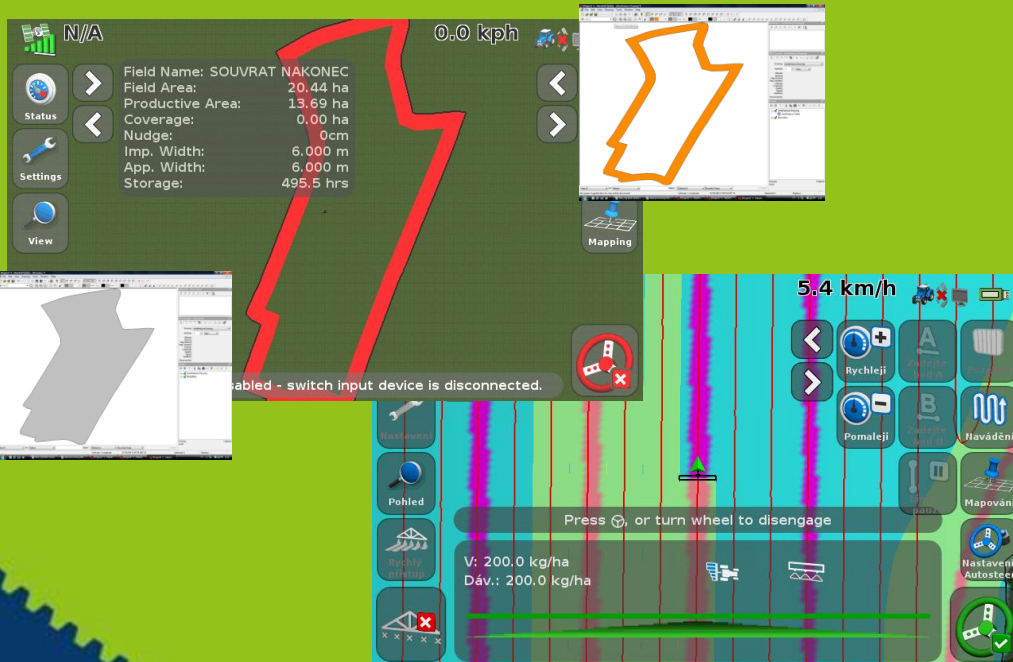
KVALITA • INOVACE • SOFISTIKOVANÁ ŘEŠENÍ



Farm advisory, data processing

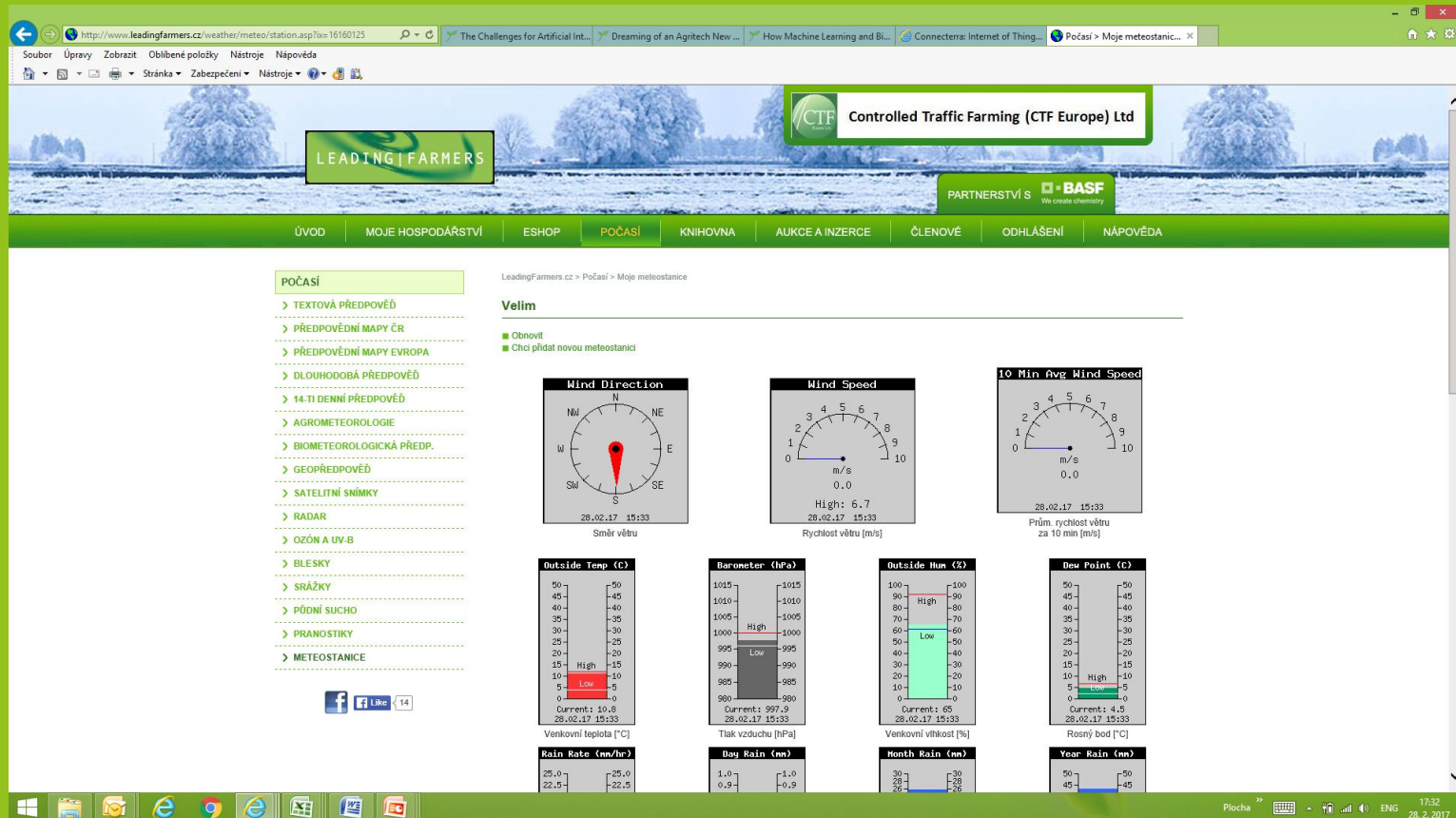
- Seamless data transfer between vehicles/sensors and backoffice/mobile device
- soil analyses by Veris MSP3 platform
- on site analyses of soil nitrates and pH
- on site analyses of nutritional status of crops (chlorophyllmetres and other optical systems)
- drone based remote sensing
- satellite data processing
- yield monitors data processing
- guidance lines, boundaries and zones management for guidance displays
- VR prescription maps
- general data aggregation and analysing

Farm advisory, data processing - pictures



Internet advisory, trading, communication and information platform www.leadingfarmers.cz

- First web based trading, advisory, communication and information system for farms in the Czech Republic since 2000



KVALITA • INOVACE • SOFISTIKOVANÁ ŘEŠENÍ

LEADING FARMERS

Leading Farmers CZ, a.s.

Klanovicka 485/43

198 00 Praha 14

Czech Republic

phone and fax: +420 281 860 862

e-mail: obchod@LFC.cz

www.leadingfarmers.cz

VAT reg. no. CZ26207214

KVALITA • INOVACE • SOFISTIKOVANÁ ŘEŠENÍ

